

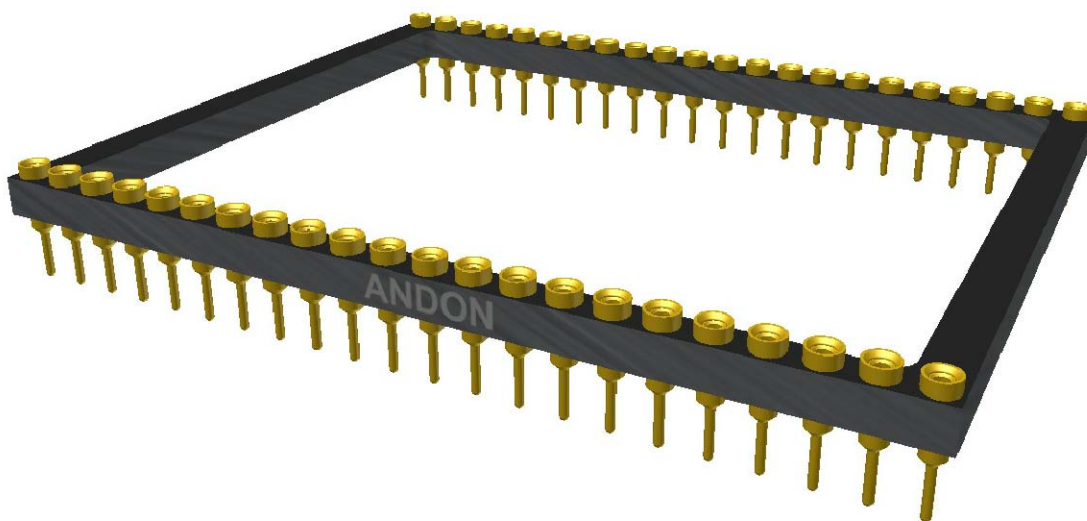


HIGH RELIABILITY IMAGE SENSOR SOCKETS FOR TELEDYNE DALSA



TELEDYNE DALSA

A Teledyne Technologies Company



Featuring Andon's Unique Senstac Contact

Image Sensor Sockets

TELEDYNE DALSA						
TELEDYNE DALSA Model Number	Andon Part Number Replace "XXX" with Terminal Type	Terminal Type		Pin Ø [in]	Figure Number	Page Number
		Thru-Hole	Surface Mount			
IA-DJ-02084	IS229-2639-XXX-R29-L14	01M	93M	.018	4	1
IA-DJ-00524	IS229-1639D-XXX-R29-L14	80M	93M	.018	6	2
IA-DJ-01044	IS229-1639D-XXX-R29-L14	80M	93M	.018	6	2
FTF6040C	575-20-16-096-XXX-R29-L14	01M	93M	.018	3	1
FTF6040M	575-20-16-096-XXX-R29-L14	01M	93M	.018	3	1
FTF6080C	575-25-04-080-XXX-R29-L14	01M	93M	.018	1	1
FTF6080M	575-25-04-080-XXX-R29-L14	01M	93M	.018	1	1
FTF7046C	575-20-16-096-XXX-R29-L14	01M	93M	.018	3	1
FTF7046M	575-20-16-096-XXX-R29-L14	01M	93M	.018	3	1
FTF9168C	580-25-02-080-XXX-R29-L14	75M	384M	.018	5	2
FTF9168M	580-25-02-080-XXX-R29-L14	75M	384M	.018	5	2
FTT1010M	IS231-1476-XXX-P29-L14	01M	93M	.018	2	1

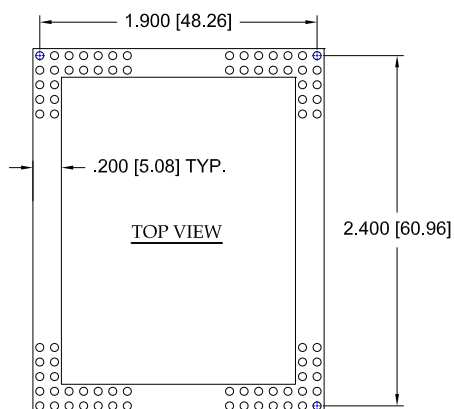


Fig.1

Thru-Hole: 575-25-04-080-01M-R29-L14
Surface Mount: 575-25-04-080-93M-R29-L14

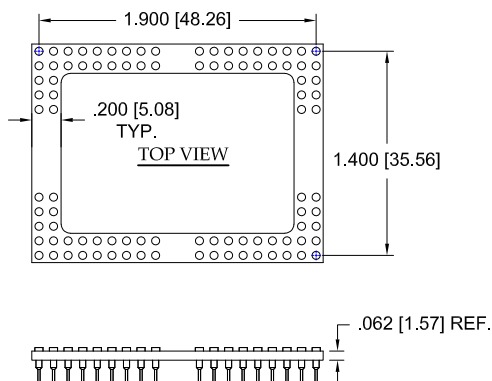


Fig.3

Thru-Hole: 575-20-16-096-01M-R29-L14
Surface Mount: 575-20-16-096-93M-R29-L14

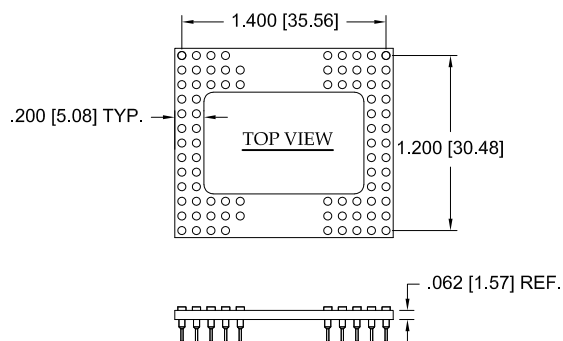


Fig.2

Thru-Hole: IS231-1476-01M-R29-L14
Surface Mount: IS231-1476-93M-R29-L14

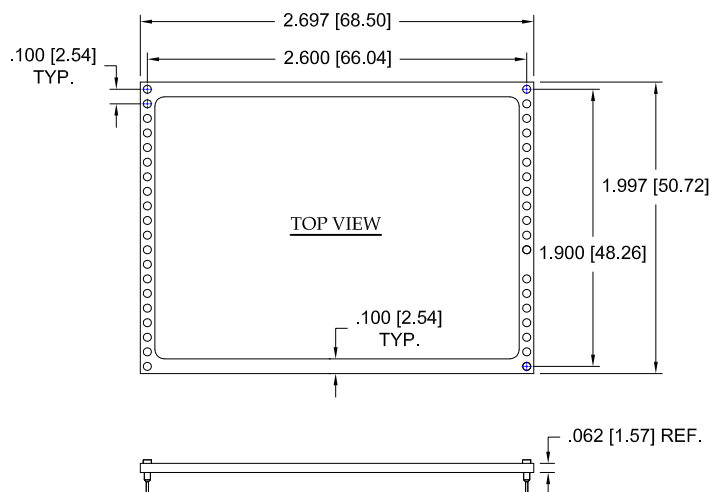


Fig.4

Thru-Hole: IS229-2639-01M-R29-L14
Surface Mount: IS229-2639-93M-R29-L14

TELEDYNE DALSA *Continued* Image Sensor Socket Footprints

Units: in [mm]

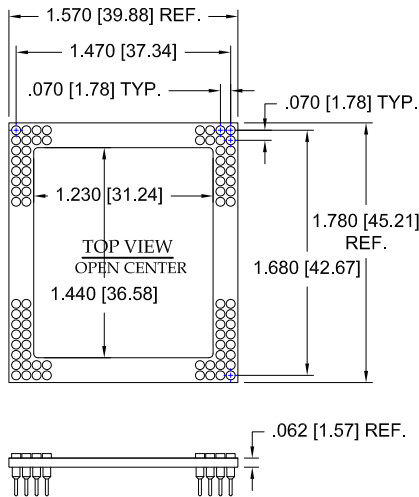


Fig.5

Thru-Hole: 580-25-02-080-**75M**-R29-L14
Surface Mount: 580-25-02-080-**384M**-R29-L14

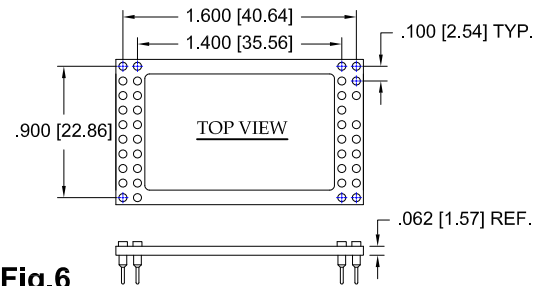
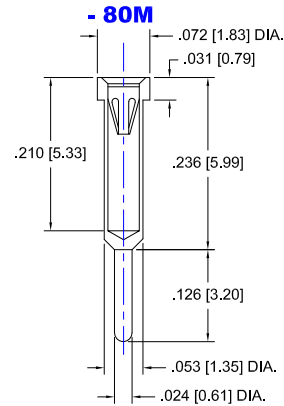
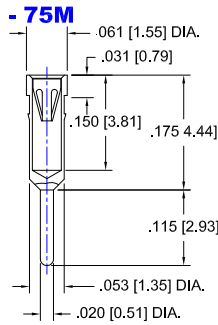
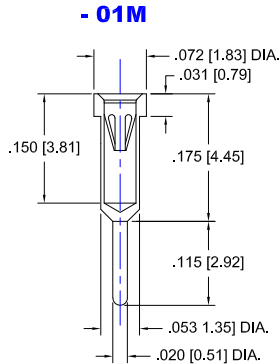


Fig.6

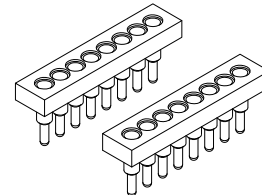
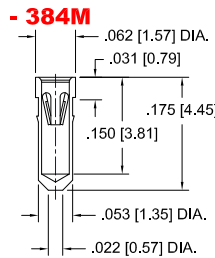
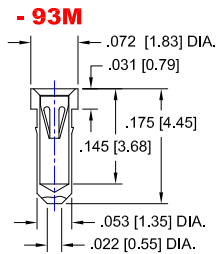
Thru-Hole: IS229-1639D-**80M**-R29-L14
Surface Mount: IS229-1639D-**93M**-R29-L14

TELEDYNE DALSA *Continued* Socket Terminal Details Cross Section View Shown Units: in [mm]

THRU HOLE OPTION



SURFACE MOUNT OPTION



SIPS AVAILABLE
(CONTACT FACTORY)

Technical Information

Material:

Insulator: Hi-Temp UL 94V-O

-L14 Black FR4 Laminate

-S14 Black Nylon 46 30% Glass Filled

Terminal: Brass, per ASTM-B16

Contact: BeCu, Per ASTM-B194

Adapter: Copper Alloy Plated Gold

Solderball: Lead Free 96.5% Tin, 3.0% Silver, 0.5% Copper

Plating: RoHS COMPLIANT

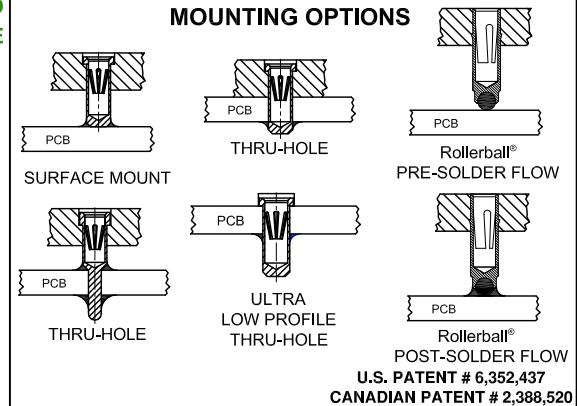
R27 TERMINAL: GOLD / CONTACT: GOLD

OTHER PLATINGS AVAILABLE

Terminal Acceptance and Forces

Thru-Hole Terminals				Surface Mount Terminals			
Thru Hole Terminal	Accepts Pin Diameter	Insertion Force	Withdrawal Force	Surface Mount Terminal	Accepts Pin Diameter	Insertion Force	Withdrawal Force
-01M	Ø.018 [Ø0.46]	1.6 oz Max	0.5 oz Max	-93M	Ø.018 [Ø0.46]	1.6 oz Max	0.5 oz Max
-75M	Ø.018 [Ø0.46]	1.6 oz Max	0.5 oz Max	-384M	Ø.018 [Ø0.46]	1.6 oz Max	0.5 oz Max
-80M	Ø.018 [Ø0.46]	1.6 oz Max	0.5 oz Max				

MOUNTING OPTIONS



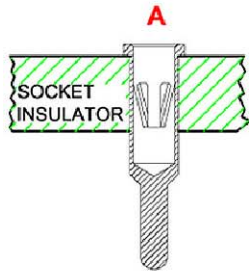
©Copyright 2018 Andon Electronics Corporation. All Rights Reserved. This material is protected under US and other copyrights and may not be copied, sold, or redistributed in any form without written permission of Andon Electronics Corporation. Copyrights and trademarks are property of their respective companies. We reserve the right to change specifications without notice. Andon makes no warranty, expressed or implied, as to the suitability of the sockets for the intended purpose.

RoHS Compliant

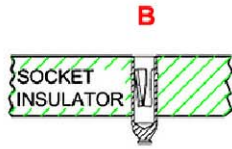
Andon Proprietary Information

*Sockets are not drawn to scale TELEDYNE DALSA 07/02/2018

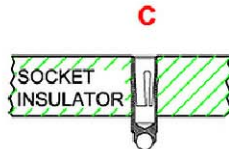
Mounting Options



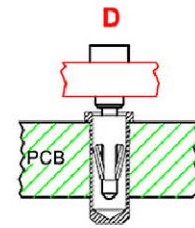
THRU-HOLE



SMD-FLAT FOOT



ROLLERBALL



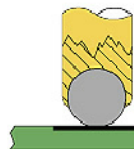
PCB FOR THRU-HOLE
INSULATOR FOR SMD

**CARRIER
WITH OR WITHOUT
SOLDER
WASHER**



**PIN SOCKET
BULK
WITH OR WITHOUT
SOLDER
WASHER**

**ROLLERBALL®
SOCKET**



BEFORE SOLDERING

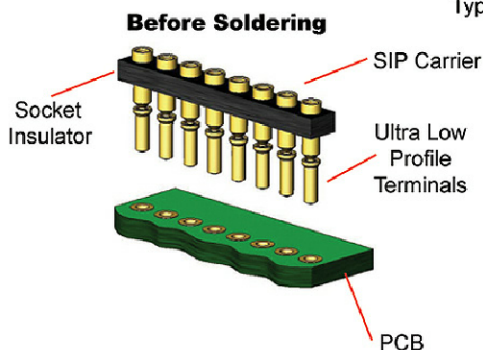
**ROLLERBALL®
SOCKET**



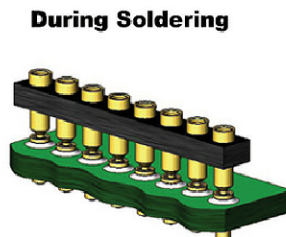
AFTER SOLDERING

U.S. PATENT # 6,352,437
CANADIAN PATENT # 2,388,520

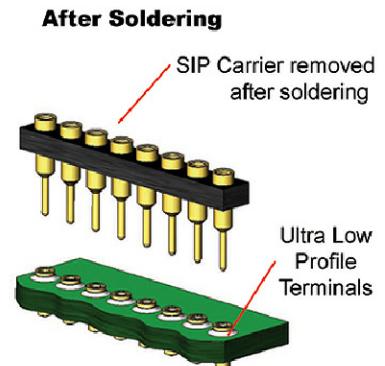
ULTRA LOW PROFILE SIP/DIP/PGA CARRIER ASSEMBLY



Type D



During Soldering



After Soldering

Available with or without solder washer