



High-Reliability Portable Battery Sockets for

EAGLEPICHER⁺
TECHNOLOGIES



Featuring Andon's Unique SenstacTM Contact

EaglePicher Technologies						
EaglePicher Model Number	Andon Part Number Replace "XXX" with Terminal Type	Terminal Type		Pin Ø [in]	Figure Number	Page Number
		Thru-Hole	Surface Mount			
LTC-3NM1-0523	BS-00663-300-02-XXX-R27-L14	295V	439V	.030	1	1
LTC-3PN	BS-00663-300-02-XXX-R27-L14	295V	439V	.030	1	1
LTC-3PN-S2	BS-00663-300-02-XXX-R27-L14	295V	439V	.030	1	1
LTC-3PN-S4	BS-00663-300-02-XXX-R27-L14	295V	439V	.030	1	1
LTC-3PN-M1	BS-00663-300-02-XXX-R27-L14	295V	439V	.030	1	1
LTC-7P	CSP1100-04-02-XXX-R27-L14	295V	439V	.030	5	1
LTC-7PMP	BS-0065-700-02-XXX-R27-L14	295V	439V	.030	4	1
LTC-7PMS	BS-0065-700-02-XXX-R27-L14	295V	439V	.030	4	1
LTC-7PN	CSP1100-04-02-XXX-R27-L14	295V	439V	.030	5	1
LTC-7PN-S2	BS-0065-700-02-XXX-R27-L14	295V	439V	.030	4	1
LTC-7PN-S4	BS-0065-700-02-XXX-R27-L14	295V	439V	.030	4	1
LTC-7PN-M1	BS-00663-300-02-XXX-R27-L14	295V	439V	.030	1	1
LTC-15MC-S1	BS-00662-500-02-XXX-R27-L14	295V	439V	.030	3	1
LTC-15MC-S7	BS-00662-500-02-XXX-R27-L14	295V	439V	.030	3	1
LTC-16M-S2	BS-00662-500-02-XXX-R27-L14	295V	439V	.030	3	1
LTC-16M-S4	CSP1600-04-01-XXX-R27-L14	295V	439V	.030	6	1

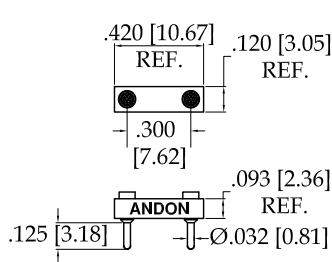


FIG. 01 2 PIN
Thru-Hole: BS-00663-300-02-295V-R27-L14
Surface Mount: BS-00663-300-02-439V-R27-L14
Low Profile: 9-BS-00663-300-02-439V-R27-L14

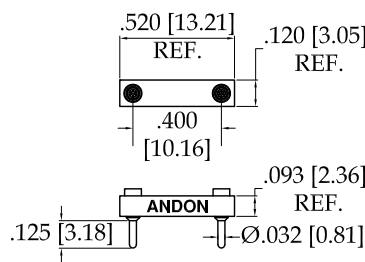


FIG. 02 2 PIN
Thru-Hole: BS-00664-402-02-295V-R27-L14
Surface Mount: BS-00664-402-02-439V-R27-L14
Low Profile: 9-BS-00664-402-02-439V-R27-L14

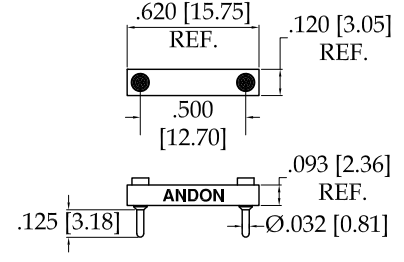


FIG. 03 2 PIN
Thru-Hole: BS-00662-500-02-295V-R27-L14
Surface Mount: BS-00662-500-02-439V-R27-L14
Low Profile: 9-BS-00662-500-02-439V-R27-L14

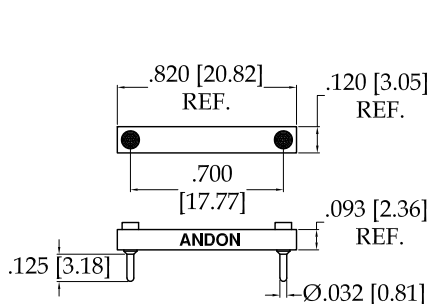


FIG. 04 2 PIN
Thru-Hole: BS-00665-700-02-295V-R27-L14
Surface Mount: BS-00665-700-02-439V-R27-L14
Low Profile: 9-BS-00665-700-02-439V-R27-L14

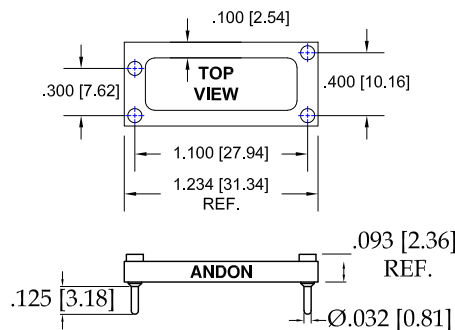


FIG. 05 4 PIN
Thru-Hole: CSP1100-04-02-295V-R27-L14
Surface Mount: CSP1100-04-02-439V-R27-L14
Low Profile: 9-CSP1100-04-02-439V-R27-L14

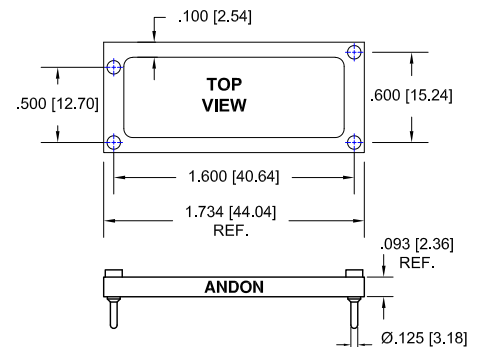


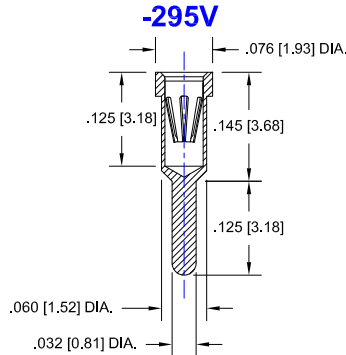
FIG. 06 4 PIN
Thru-Hole: CSP1600-04-01-295V-R27-L14
Surface Mount: CSP1600-04-01-439V-R27-L14
Low Profile: 9-CSP1600-04-01-439V-R27-L14

EaglePicher Technologies Continued

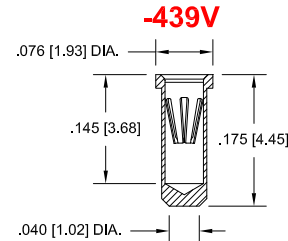
Socket Terminal Details

Cross Section View Shown
Units: in [mm]

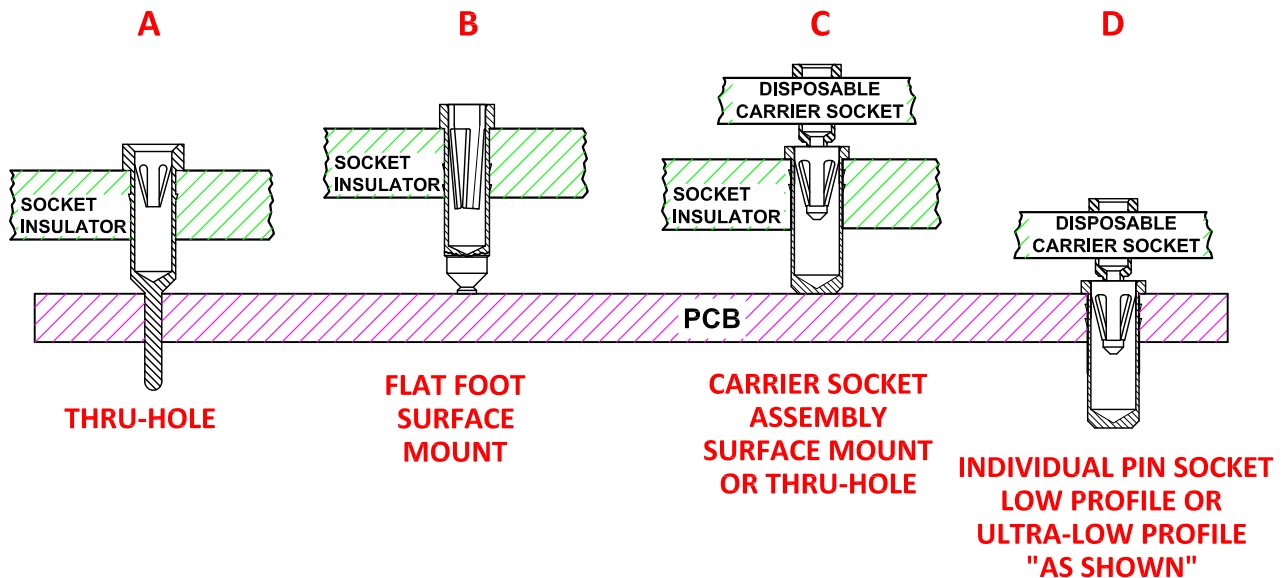
THRU HOLE OPTION



SURFACE MOUNT OPTION



Socket & Terminal Options



Technical Information

Material:

Insulator: Hi-Temp UL 94V-O
Terminal: Brass, per ASTM-B16
Contact: BeCu, Per ASTM-B194

Plating: RoHS COMPLIANT

R27 TERMINAL: GOLD / CONTACT: GOLD

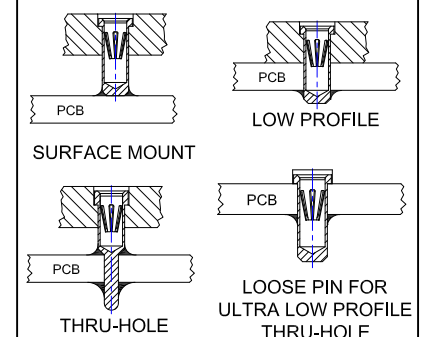
R17 TERMINAL: TIN / CONTACT: GOLD

OTHER PLATINGS AVAILABLE

Terminal Acceptance and Forces

Thru-Hole Terminals				Surface Mount Terminals			
Thru-Hole Terminal	Accepts Pin Diameter	Insertion Force	Withdrawal Force	Surface Mount Terminal	Accepts Pin Diameter	Insertion Force	Withdrawal Force
-295V	Ø.030 [Ø0.76]	13.2 oz Max	3.5 oz Min	-439V	Ø.030 [Ø0.76]	13.2 oz Max	3.5 oz Min

MOUNTING OPTIONS



Andon Proprietary Information
RoHS Compliant

*Sockets are not drawn to scale EaglePicher Technologies 01/29/2024

For fast, accurate placement of SIP sockets and ultra-low profile terminals

Phase 1:
Receive Carrier Assemblies designed to your pin layout.



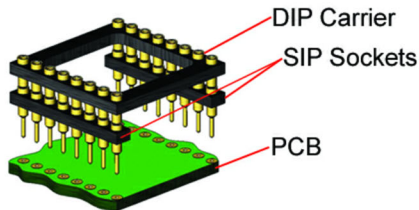
Phase 2:
Place carrier assemblies onto PCB; run through your soldering process.



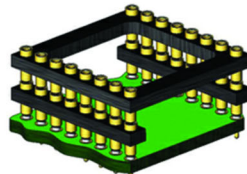
Phase 3:
Remove carrier and plug in your device; discard carrier.

DIP

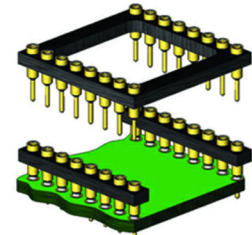
Before Soldering



During Soldering

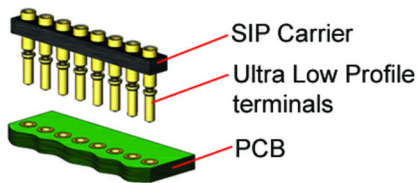


After Soldering

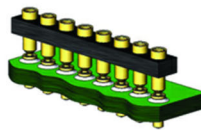


ULTRA-LOW PROFILE SIP

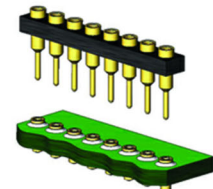
Before Soldering



During Soldering

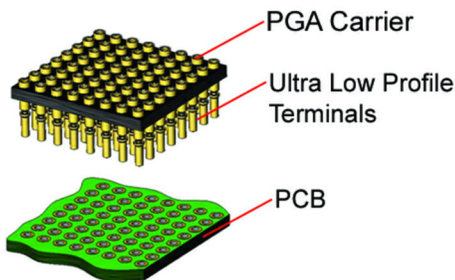


After Soldering

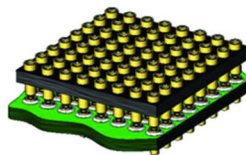


ULTRA-LOW PROFILE PGA

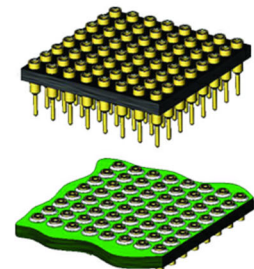
Before Soldering



During Soldering

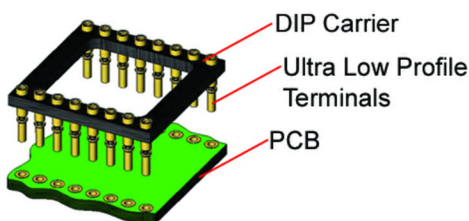


After Soldering

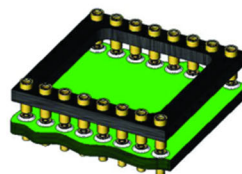


ULTRA LOW PROFILE DIP

Before Soldering



During Soldering



After Soldering

